

# MICRO FACTORY PROJECT

---

CONSTRUCTION MADE

- FASTER
- SMARTER
- SUSTAINABLE

## A B O U T



**Daylun** designs and builds pre-engineered sustainable homes for builders and government housing initiatives, delivering cost-effective solutions with breakthrough technology, innovative methods, and patented products.



PROBLEM

# Housing Shortage



## Labour Shortages

Reliance on manual labor which limits efficiency and productivity



## Environmental Impact

Difficulty in adopting sustainable practices.



## Innovation And Technology

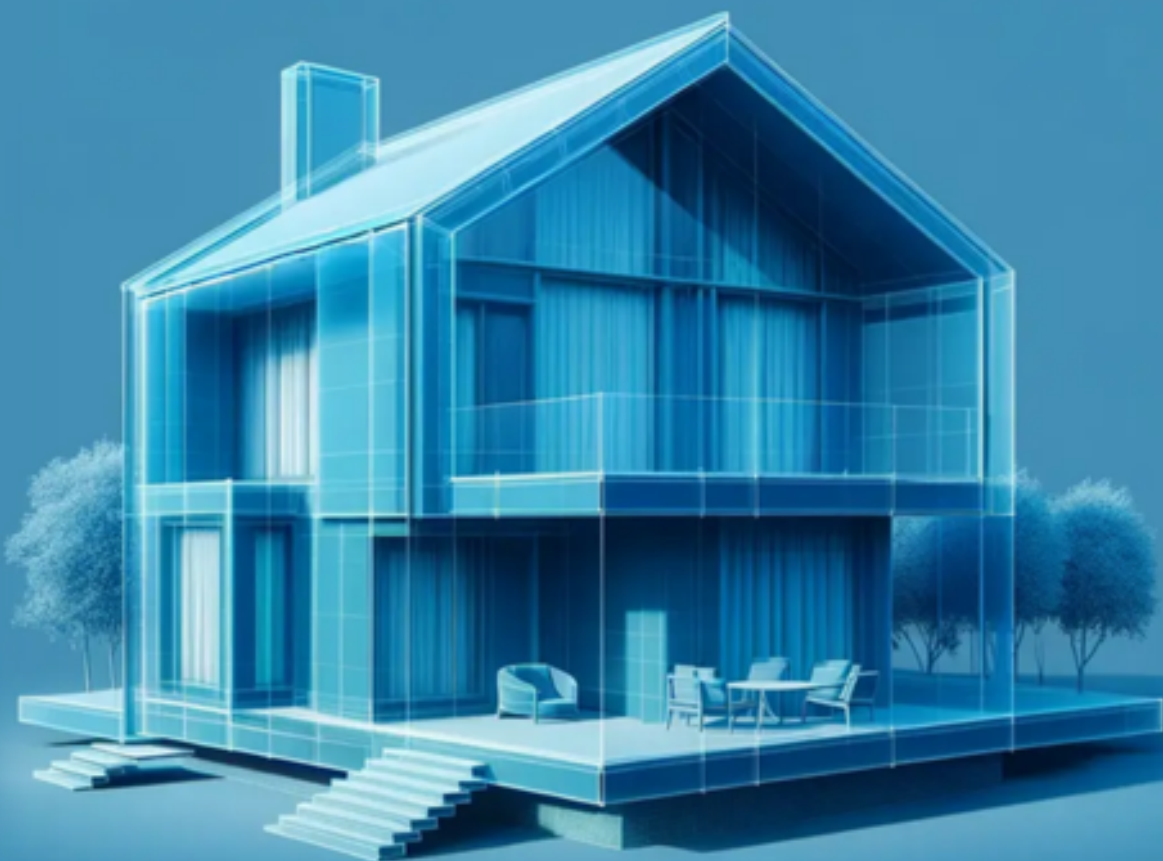
Resistance to change



## Lack Of Affordable Housing

Due to scarcity of resources

||



# Daylun Solution

- Easy online ordering
- Innovation
- Automation
- Speed
- Sustainable



# Why Now?

Canada Faces a critical  
housing crisis with a  
need for

**3M**

HOMES  
BY  
2030

Immediate action is  
essential to meet this  
demand with sustainable,  
efficient solutions while  
leveraging available grants,  
funding, and cutting edge  
technology.

# MARKET OPPURTUNITY

Canada and the Yukon are facing a critical housing shortage, compounded by remote location challenges and extreme climate needs.

Canada  
Needs

3M

Homes  
By

2030

The Yukon plays a vital role in addressing Canada's housing crisis by serving as both a production hub and a testing laboratory for innovative building science and materials. Daylun's micro-factory will provide localized, sustainable housing solutions, reduce transportation costs, and create economic opportunities for the region while advancing construction technologies for broader national impact.





PRODUCT

25% COST SAVING



PASSIVE DESIGN

80% LESS ENERGY



INSULATION

R-50+ WALLS  
R-70+ ROOF



PANELIZED SYSTEM

Easy to produce and build  
2 Bolt sizes 2 screw sizes

# THE FACTORY



**State-of-the-Art Facility:** Equipped with advanced AI, robotics, and an integrated laboratory for material testing and innovation. This ensures precision, efficiency, and groundbreaking advancements in off-site construction.

**Scalable Design:** The factory's simple yet scalable infrastructure allows for seamless expansion to meet growing market demands.

**High Output Capacity:** Capable of producing up to **20 Houses per month**, ensuring consistent supply for housing projects.

**Profitability:** Designed to achieve high margins through efficient production processes, low waste, and reduced labour dependency.



# THE LAB

A modern laboratory with large windows, wooden ceilings, and various scientific equipment. The room is bright and spacious, with a long table and stools in the foreground. The background shows more equipment and a view of the city through the windows.

## INNOVATION

1. Training and education
2. Yukon University co-operation
3. Rammed Earth development
4. Waterproofing with Organics
5. Development of Composite material
6. 3d printing for construction
7. Develop Mechanical room technology

## TESTING

1. Window penetration
2. Passive envelop testing
3. Concrete MPA tester
4. Thermal Conductivity
5. Cold climate testing
6. Permeable asphalt testing

# TEAM OF LEADERS & INNOVATORS

**State-of-the-Art Factory**  
Whitehorse, Yukon Canada

# TEAM OF LEADERS & INNOVATORS

## Project Lead: **DAYLUN**

Daylun, an award-winning construction materials company, is leading this project with both financial investment and dedicated expertise. We chose Whitehorse to introduce innovation **where it can create an immediate impact**, bringing organic solutions and **advanced technology** to an industry that lacks both.

Our **micro-factory model** allows us to refine AI, robotics, and production-line programming on a small scale, making it easily scalable into a high-capacity multi-line facility.

**Our core objectives—speed, sustainability, and affordability** drive our commitment to producing high-performance homes that exceed all building codes.

Our ultimate goal is to become the **world leader in off-site homebuilding** while establishing **Whitehorse, Yukon, as a global hub for building science and innovation.**

## WHAT SETS US APART

We produce our own products and lead by innovation



# TEAM OF LEADERS & INNOVATORS



## Building Partner

Bathurst Design and Build (BDB) is our trusted construction partner, responsible for overseeing the building of both the micro-factory and the condo pilot project. As a full-service project and construction management firm, BDB specializes in integrating technology and sustainability to create functional, high-performance spaces. Their expertise in precision building, innovative design, and environmentally conscious construction makes them the ideal partner to bring Daylun's vision to life, ensuring the highest quality and efficiency in every aspect of the project.



# INVESTMENT OPPORTUNITY

**State-of-the-Art Factory**  
Whitehorse, Yukon Canada

BUSINESS MODEL

# REVENUE STREAM REPEATABLE SCALABLE SOLUTIONS



LICENSING



BUILDING  
MATERIALS



DAYLUN BLUE  
SHELL



COMPLETE  
UNITS



II

ROI RETURN ON INVESTMENT

# INVESTMENT 3 OPTIONS

**A**

4 YEAR EARLY EXIT  
2030

**20%**  
EQUITY

**B**

4 YEAR EARLY EXIT  
2030

**14%**  
RETURN

**C**

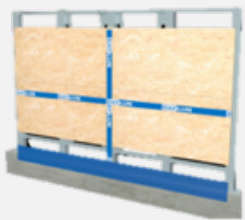
8 YEAR EXIT  
2034

**X3**  
RETURN

TECHNOLOGIES

# WHAT SETS APART

Daylun will constantly be updating its products with the latest in Building Science



WALL SYSTEM

Daylun’s patent snap-together wall system



EVA BOARD

A revolutionary lightweight and stronger alternative to traditional drywall.



VEGETABLE GLUE

Ground breaking Vegetable glue addresses numerous sustainability challenges in the construction industry.



BAMBOO

Daylun introduces a wide range of Bamboo products. From OSB boards to beams



GANTRY CRANE

Developing Inexpensive lightweight crane eliminates time and labour.



# TRACTION

PROOF OF CONCEPT

## ACHIEVEMENTS

